

DRAWING BOARD

Designers Darren Taylor and Tom Howley have made full use of a large open-plan space complete with glazed doors and roof lantern to create practical kitchens with plenty of wow factor

Words: Hayley Gilbert

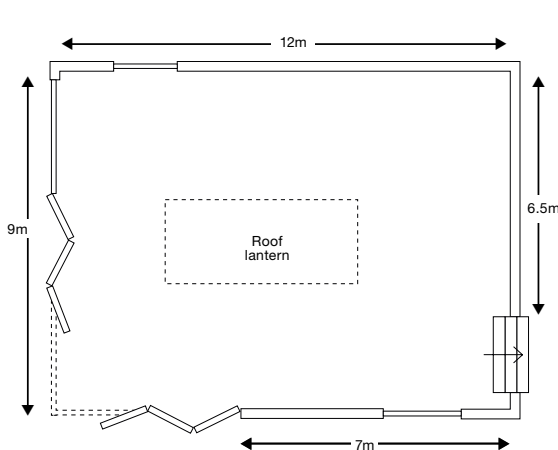
THE CLIENTS

Florence and Chris Filer live in Keswick in a four-bedroom detached home in the heart of the beautiful Lake District. "We are looking to create a 'forever' kitchen in which to enjoy our retirement," says Chris. "We want a sociable family space where we can entertain our two grown-up children and their families (including five small grandchildren), who often visit for the weekend."

THE BRIEF

The house was built in the 1920s but has been extended considerably over the years. The kitchen is situated at the back in a large extension that is glazed completely on one wall and partially on the other with bi-fold doors. It also features a roof lantern up above, so is flooded with light at all times of the day. The couple want a kitchen that will open up to the garden when the sun shines, but also work as a space in which they can enjoy the garden views when the weather is less than clement. As such, they'd like clear sightlines throughout the room. "In terms of style we are looking for well-built cabinetry but with plenty of modern touches – bespoke furniture that features all the latest storage," adds Chris. "Florence isn't tall so would prefer not to have too many wall cupboards." The couple don't want high gloss and would consider natural wood but are open to suggestions. The flooring will be a pale, honed limestone so the furniture should complement this. "We love to cook so would be looking for a full suite of appliances, including two ovens, steam oven, induction hob and American-style fridge-freezer," explains Chris, "although we don't necessarily want to make a statement with the appliances, so these could be integrated." Good extraction is also key in this glazed and open-plan space. There is a separate utility room so there is no need to consider laundry appliances.

THE SPACE



The room will be used as a kitchen and dining room and the couple would also like a comfortable seating area, although this will not be the main living room as this is situated elsewhere. The space measures 12 x 9m with bi-fold doors running along half of one side and for most of the back, enabling it to open up fully at the corner on to the garden. There are also two other windows and the kitchen is slightly lower than the rest of the house so the room is entered down three steps via an opening, rather than a door.

THE BUDGET

£70,000, excluding installation.

SOLUTION ONE

DARREN TAYLOR, SEARLE & TAYLOR



Darren Taylor is managing director of Hampshire-based Searle & Taylor, a premium kitchen business with two showrooms. He is a skilled cabinet-maker and designer and a specialist in bespoke kitchens and lifestyle solutions.

SOLUTION TWO

TOM HOWLEY, TOM HOWLEY



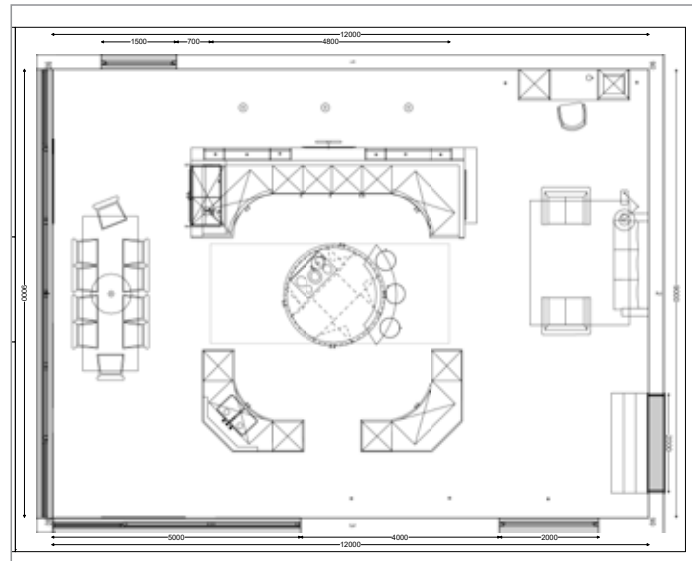
Tom Howley started his career as a cabinet-maker in Ireland and is now recognised as one of the UK's leading designers. Tom Howley Kitchens creates beautiful bespoke kitchen furniture.

YOUR PROJECTS

Do you have a kitchen, bedroom or bathroom project in the pipeline? If you'd like to put it to our Drawing Board designers, email ruthbell@taylistmedia.com and tell us more.

SOLUTION ONE

DARREN TAYLOR, SEARLE & TAYLOR



“Having reviewed the client brief and the space that I would be working with, I first considered orientation and how the entire roomset will work,” reveals Darren. “Given the luxury of space, I wanted to create a kitchen and lifestyle area that will work both in parts and as a whole.”

“Taking on board the size of a growing extended family, plus the sheer size of the space, I placed the kitchen exactly in the centre of the room with a circular island directly and centrally under the large ceiling lantern, as this is an obvious focal point. All main working areas and seating face the stunning views that are visible through the existing glazed doors.”

“To enable this to work, I have built an internal stud wall for the tall run of units to fit against – it is 250mm from the ceiling so that light from the roof lantern will still reach the whole room. The 30mm-thick in-frame Shaker-style furniture is a mix of hand-painted fronts using two different paint colours. This is accented using dark oak back panels, shelving and internal carcasses and drawers. The colour palette works well with the clients’ choice of limestone flooring yet will not steal the limelight from the wonderful views of Keswick. This run of cabinets centrally houses the bank of ovens with an integrated fridge and freezer installed symmetrically either side of a curved walk-in larder with internal shelving.”

“At one end of this unit near the dining area is a false front concealing a bar area behind pocket doors. When closed, antiqued mirror glazed doors with Art Deco-

style oak glazing bars reflect the views outside. When opened, the doors slide into recesses to reveal a working bar with dual-zone wine unit and Zip tap offering chilled and sparkling water. The leathered granite Silestone counter matches the kitchen worktops and backlit glass shelving is used for bottles and glasses above. The 10-seater dining table in matching dark oak is a stand-alone piece, but it faces the view of the gardens and beyond. To soften the reverse of the stud wall, I have used dark oak integrated shelving that faces the reading zone, so all space is maximised, front and back.”

“The central kitchen includes a large circular island incorporating a Nicola Tesla downdraft induction hob, which simultaneously cooks and extracts via 8-inch ducting under the floor to the outside. Casual seating at the cantilevered semi-circular oak bar provides a relaxed space for informal dining. Two further curved islands mirror each other with painted fronts and angled oak backs. One includes the sink area with an integrated dishwasher and pull-out bin, while the other separately stores crockery and cutlery. With the kitchen occupying centre stage, it is the main focal point of the room, allowing the other various zones to work in harmony.”

Searle & Taylor 01962 850851 or
www.searle-taylor.co.uk

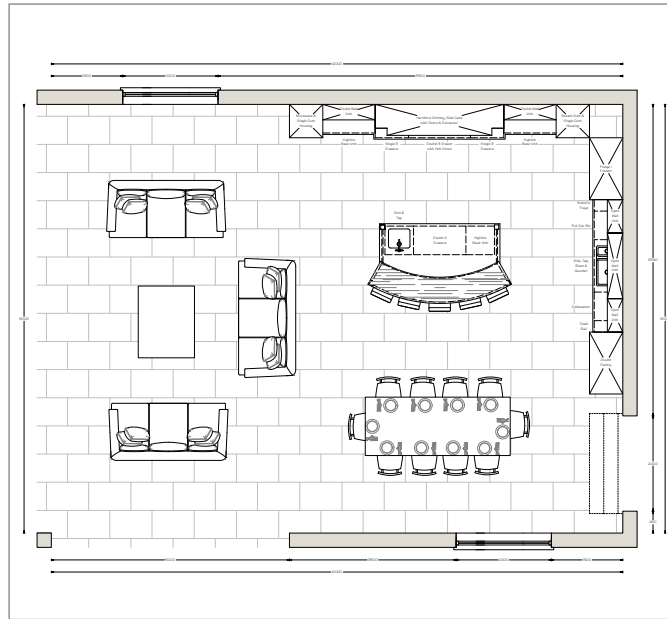
Turn to page 80 for the specifications and the verdict.



“With the kitchen occupying centre stage, it is the main focal point of the room, allowing the other various zones to work in harmony.”

SOLUTION TWO

TOM HOWLEY, TOM HOWLEY



“To start, I looked at the space available and how to get the best from the very large, open-plan room,” explains Tom. “As you step down into the room it was only natural that the kitchen would be positioned to the right-hand side – this means that we are able to get the most from the light from the bi-fold doors without obstructing the other two windows. With this in mind I have positioned the dining table near to the kitchen itself and left room for a cosy area with sofas towards the bi-fold doors looking into the garden.”

“The clients are looking for a ‘forever’ kitchen for their home that will create a social space for all the family to enjoy. For the cabinetry I have used our Hartford design, painted in our own bespoke paint colour, Lovage, which is a warm shade of grey that will complement the space all year around. This is matched with Smoked Oak veneer internals in all the cabinets and also as a feature breakfast bar on the curved island.”

“The layout of the room is what makes the design so successful. The island is perfectly located overlooking the dining table, and for more informal eating we have a large curved breakfast bar with seating space for five. It was important when designing this kitchen

that everything was in close proximity to each other. The island can be used for food prep and even the grandchildren can get involved sitting around the breakfast bar. As keen cooks, appliances are important for Florence and Chris, so we have included a full suite of Neff appliances, including a steam oven and induction hob.

“The key when designing this kitchen was of course to ensure that the clients’ requirements were met, but I also wanted to create balance in the room, as the space is so vast. Florence initially wasn’t looking for any high-level wall cabinetry, however when we looked at the design together we agreed that some taller cabinetry was needed to create a sense of scale in the space and this could be used as secondary storage. On the back wall we have included some open-fronted display cabinets, which will be perfect for displaying special occasion crockery, and have also kept the Smoked Oak internals exposed here, which adds more depth to the design and a more contemporary feel.”

**Tom Howley 0161 848 1200 or
www.tomhowley.co.uk**

**Turn to page 80 for the specifications
and the verdict.**



“The layout of the room is what makes the design so successful. The island is perfectly located overlooking the dining table, and for more informal eating we have a large curved breakfast bar with seating space for five.”

SOLUTION ONE



THE SPECIFICATIONS

Cabinetry	£38,500
Worktops	£8500
Appliances	£18,000
Sink and taps	£4000
Total	£69,000

CONTACTS

All products available through Searle & Taylor.

THE VERDICT

“Wow! We are really impressed with Darren’s design,” says Chris. “We were clueless as to how to make the most of this large space and this scheme really maximises its full potential. There are so many clever elements and it really does take your breath away. We love the idea of having everything centrally located, as

this will enable us and our family to take in the lovely views outside, wherever we are. The mix of materials look great together, with the dark oak contrasting with the hand-painted finish and Silestone work surfaces.

“The different zones work beautifully. Florence likes the fact that she could flit from one area to another when prepping and cooking, while guests can sit and chat at the

raised breakfast bar. There’s a good flow to the kitchen too, with the ovens and hob kept at the back of the space, which will make it safer for our grandchildren as they like to run around and play. What’s more, the dining table makes great use of the views outside and with that discreet built-in bar and sofas it’s the perfect kitchen for entertaining. We couldn’t be happier!”

SOLUTION TWO



THE SPECIFICATIONS

Cabinetry	£55,400
Worktop	£7907
Appliances	£7206
Sink and taps	£3054
Total	£73,567

CONTACTS

All products available through Tom Howley.

THE VERDICT

“Here’s another stunning design,” reveals Chris. “It’s lovely to have something completely different to consider and both designers have done an amazing job. With Tom’s scheme, we love the slightly more traditional feel to the cabinetry and like the definition of the various zones for cooking, eating, relaxing

and entertaining. The long run with storage flanking the worktop and sink area is really practical and we like the hob being installed behind the curved island unit with built-in ovens either side.

“There’s plenty of storage as well as lots of work surface, which is handy as we both love to cook and the grandchildren like to help too. We also love the raised breakfast bar, which

friends and family could sit at while we prepare the meal. Florence particularly likes the idea of a massive larder and we both agree that the layout would work really well. The seating area with its three sofas will really make the most of our view and the kitchen would look amazing viewed from outside, when the bi-fold doors are open. We are so impressed with both designs and can’t wait to put these ideas into action.”